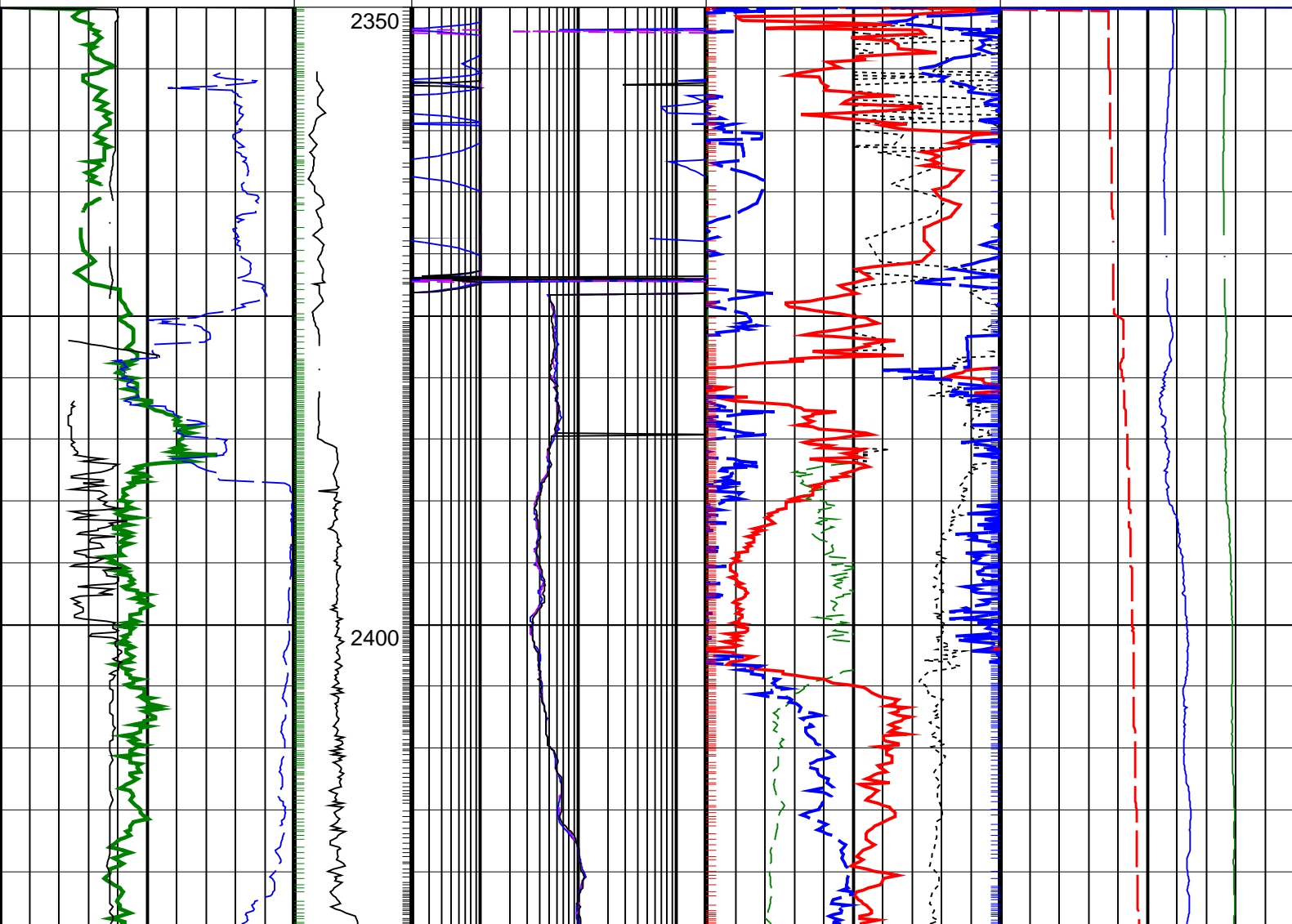
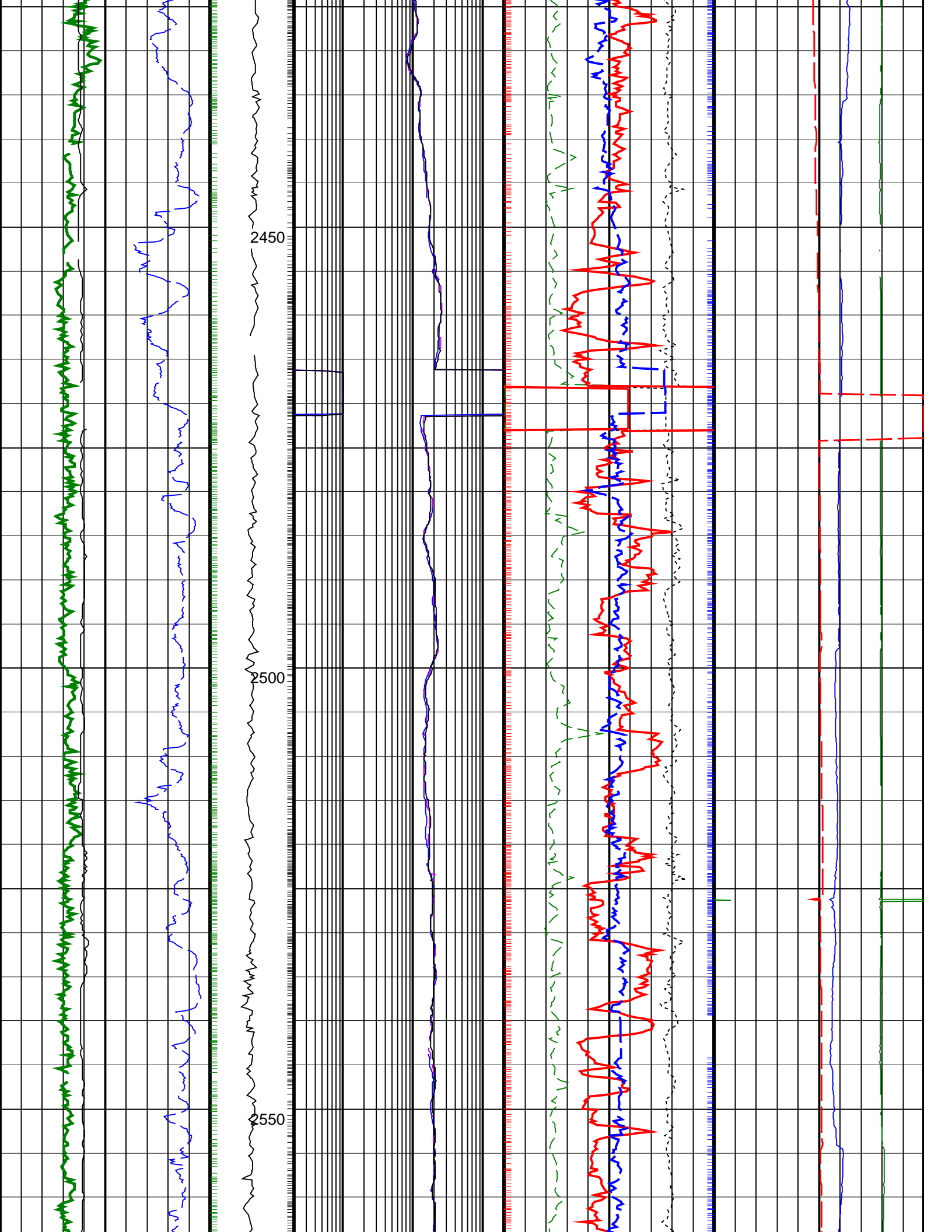


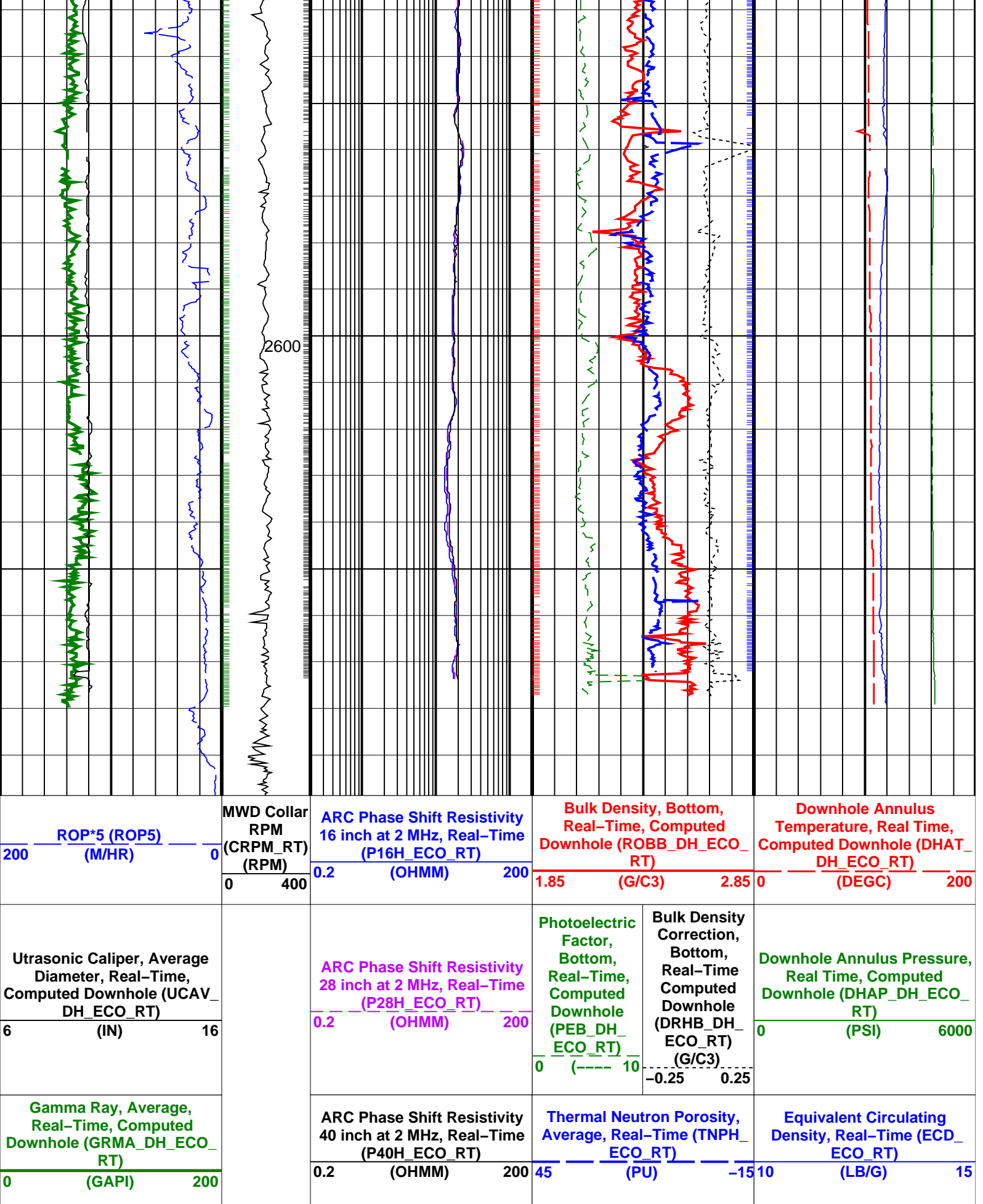
PIP SUMMARY

Density Samples +
 Gamma Ray Samples +
 Resistivity Samples +
 Neutron Samples +

Gamma Ray, Average, Real-Time, Computed Downhole (GRMA_DH_ECO_RT) (GAPI)	ARC Phase Shift Resistivity 40 inch at 2 MHz, Real-Time (P40H_ECO_RT) (OHMM)	Thermal Neutron Porosity, Average, Real-Time (TNPH_ECO_RT) (PU)	Equivalent Circulating Density, Real-Time (ECD_ECO_RT) (LB/G)
0 200	0.2 200	45 -15	10 15
Ultrasonic Caliper, Average Diameter, Real-Time, Computed Downhole (UCAV_DH_ECO_RT) (IN)	ARC Phase Shift Resistivity 28 inch at 2 MHz, Real-Time (P28H_ECO_RT) (OHMM)	Photoelectric Factor, Bottom, Real-Time, Computed Downhole (PEB_DH_ECO_RT) (G/C3)	Bulk Density Correction, Bottom, Real-Time Computed Downhole (DRHB_DH_ECO_RT) (G/C3)
6 16	0.2 200	0 10	0 6000
ROP*5 (ROP5) (M/HR)	MWD Collar RPM (CRPM_RT) (RPM)	ARC Phase Shift Resistivity 16 inch at 2 MHz, Real-Time (P16H_ECO_RT) (OHMM)	Bulk Density, Bottom, Real-Time, Computed Downhole (ROBB_DH_ECO_RT) (G/C3)
200 0	0 400	0.2 200	1.85 2.85
			Downhole Annulus Temperature, Real Time, Computed Downhole (DHAT_DH_ECO_RT) (DEGC)
			0 200







PIP SUMMARY

Density Samples +

+ Gamma Ray Samples

+ Resistivity Samples

Neutron Samples +

